



Pinewood Studios
East Gate Entrance Feature

Visuals & Drawings

arc
[Rev.11 - 08/12/22]

East Gate Feature Wall

Construction

Black and white acrylic stone fixed to an aluminium box frame bolted to steel uprights set into a concrete ground frame.

Detailed drawings are with the supporting documents.



East Gate Feature Wall - Proposed Lighting

Lighting

Rimless Icon is Brushed Stainless Steel with a White Acrylic face. Face illumination only.

Height - 344mm with a 50mm Return

Light output - 40 lumens per module. 20 modules per character. 6500k colour temp.

Power - 0.36 W.per module

Brushed Stainless built up letter halo illumination white LED. Height per character - 211mm with a 50mm return

Light output - 40 lumens per module. 8/10 modules per character. 6500k colour temp.

Power - 0.36 W per module

Brushed Stainless built up letter halo illumination white LED. Height per character - 170mm with a 35mm return

Light output - 40 lumens per module. 8/10 modules per character. 6500k colour temp.

Power - 0.36 W per module

RGB Colour change LED lighting x 14
(7 at each side of central section)

Power: 9W per light

Color Temperature: 2700K~6500K

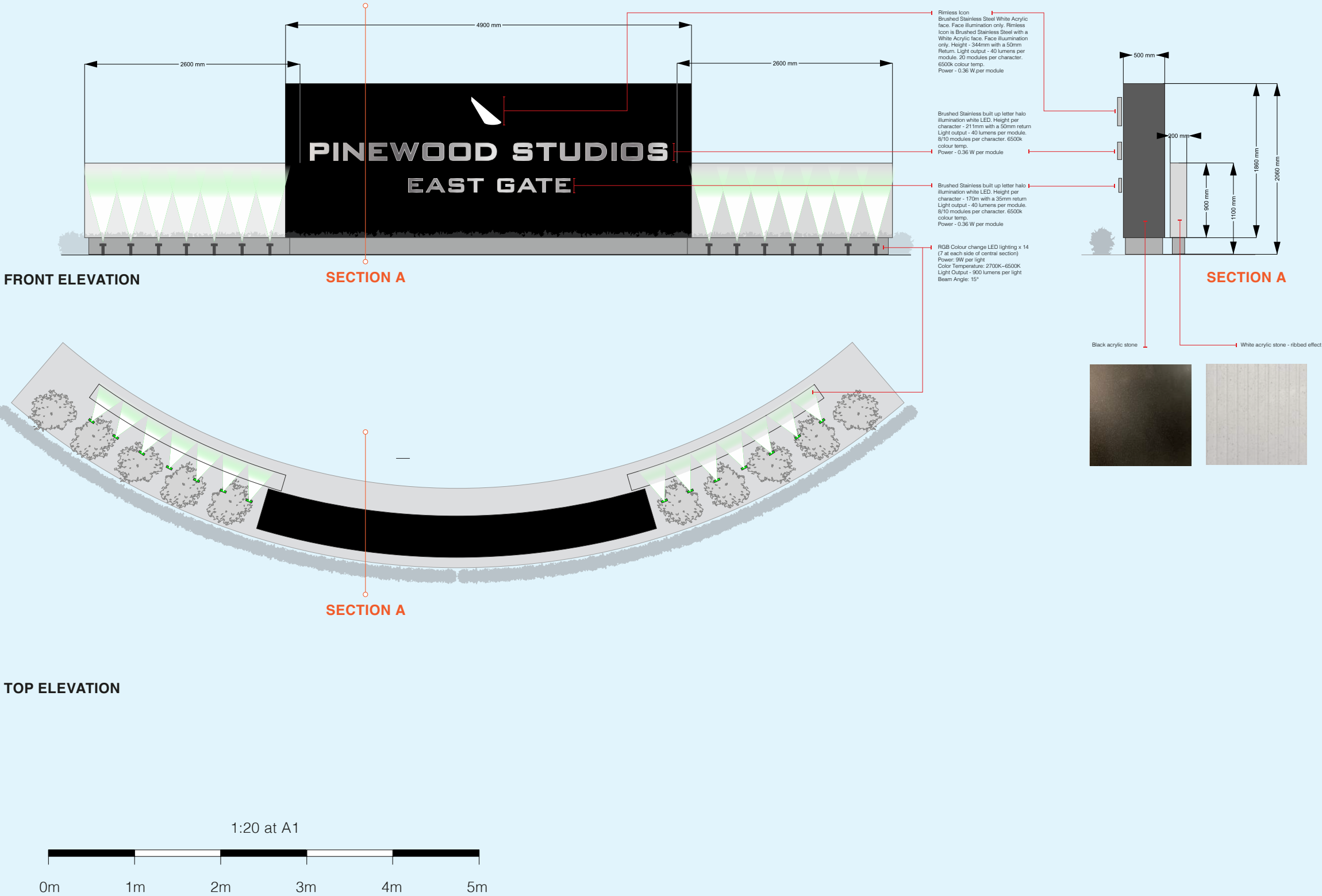
Light Output - 900 lumens per light

Beam Angle: 15°

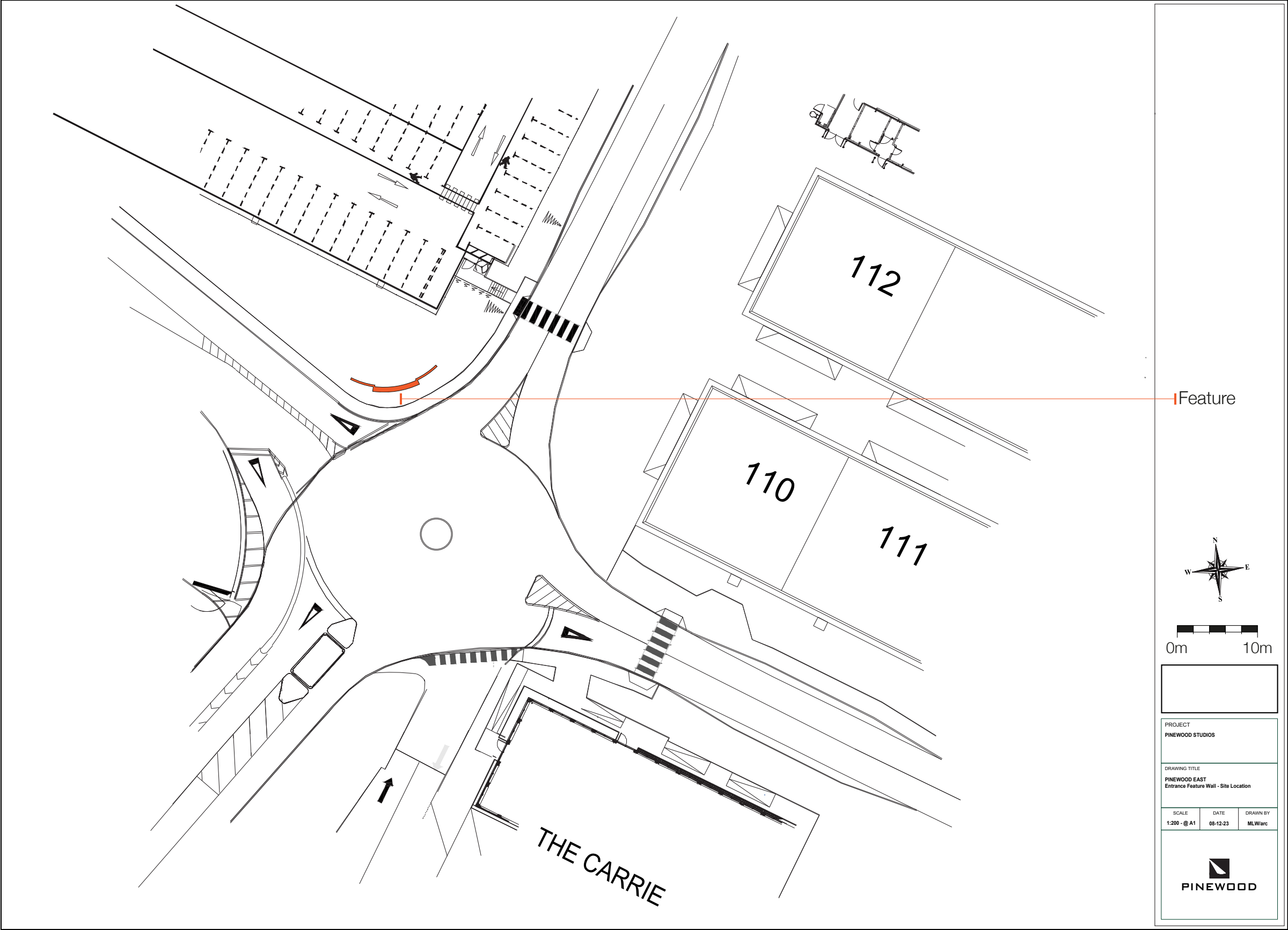
Uplighters will be hidden by the front planting.
Position of planting is approximate.



East Gate Feature Wall - General Drawing - *Supplied as seperate 1:200 @ A1 drawing*



East Gate Feature Wall - Site Location - *Supplied as seperate A1 drawing*



East Gate Feature Wall - Site Location - Supplied as seperate 1:1500 @ A1 drawing

